



Basal Cell & Squamous Cell Cancer Dermatopathology

(Introduction and Advanced)

November 6-7, 2018

.....

Fundamentals of Mohs Surgery

November 8-11, 2018

Advanced Mohs Technician Session November 7, 2018

DoubleTree Hotel San Diego, Mission Valley

Directors

Basal Cell & Squamous Cell Cancer Dermatopathology:

Henry D. Haskell, M.D.
Jason S. Stratton, M.D.

Directors

Fundamentals of Mohs Surgery:

Carlos A. Garcia, M.D.
Kenneth G. Gross, M.D.

Mohs Technician Laboratory

Director:

Alex G. Lutz, B.S.

Mohs Technician Laboratory

Co-Directors:

Juan (B.J.) Villarreal
Rick Wolf, L.P.N.

Laboratory Histopathologists:

Antoanella Calame, M.D.
John B. Campbell, M.D.
Valencia D. Thomas, M.D.

Microscope Laboratory

Coordinator:

Andrew H. Weinstein, M.D.

connect
discover
advance



AMERICAN SOCIETY
FOR MOHS SURGERY



Information

Important Meeting Information

Basal Cell & Squamous Cell Cancer Dermatopathology

Overview

Basal Cell and Squamous Cell Cancer Dermatopathology offers two full days of instruction, organized as Introductory and Advanced sessions. This course has been developed for physicians already performing Mohs surgery and those planning to introduce Mohs into their surgical practices. Doctors in both categories will gain valuable new insights in the treatment of skin cancer as a result of this “pure pathology” approach.

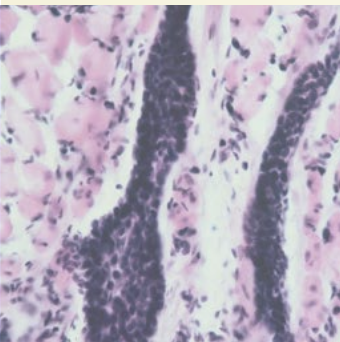
Course content includes microscope review of slide sets and lecture material developed by Board-certified dermatopathologists. Course will emphasize BCC and SCC tumors, as differentiated from anatomical structures, common mimickers of these cancers, and certain reactive changes evident at recent biopsy sites.

Participants may register to attend one of both days of the dermatopathology course. The Fundamentals of Mohs Surgery training course immediately follows on November 8-11, and features its own microscope laboratory with over 500 Mohs cases for additional study of BCC, SCC and other tumors. To maximize learning potential, you are encouraged to register for both meetings.

See detailed BCC and SCC Dermatopathology schedule at www.mohssurgery.org.

Educational Objectives

- Differentiate between various presentations of basal cell and squamous cell carcinoma under the microscope.
- Identify other non-BCC and non-SCC structures that may be present in Mohs-excised tissue.
- Demonstrate improved accuracy in histopathologic interpretation of BCC and SCC.



connect
discover
advance

Fundamentals of Mohs Surgery

Overview

The primary aim of the Fundamentals course – for both physicians and Mohs technicians – is enhanced patient care in the treatment of skin cancer. This activity presents a broad, comprehensive overview of Mohs surgical and laboratory processes. The ASMS acknowledges that Mohs competency is achieved through a combination of rigorous skin surgery and dermatopathology training in Residency, supplemental post-residency Mohs training opportunities, ongoing CME activities focusing on multiple aspects of skin cancer treatment, and the shared experiences of other highly-qualified Mohs practitioners.

This course is designed for dermatologists, dermatology Residents and other specialists who desire additional exposure to basic Mohs surgical technique. Physicians will gain knowledge of Mohs histopathology, office and laboratory set-up and supervision, patient scheduling, Mohs coding and reimbursement, and CLIA-OSHA considerations. An interactive Mohs “pearls” session offers numerous established surgical tips and pointers that participants may readily incorporate into practice.

Physician and Mohs technician roles are critically interwoven in the successful performance of Mohs surgery. For this reason, technician training is also an important aspect of Fundamentals of Mohs Surgery. This technician session runs concurrently with physician training, and provides the basic tenets of Mohs tissue processing, equipment maintenance, safety concerns, and regulatory standards. Experienced technicians will have an opportunity to discuss more advanced troubleshooting and quality assurance concerns in a 1-day supplemental session on November 7.

Faculty members are adept at working with trainees at all levels of skill and experience, helping them to gain confidence, improve efficiency, and more fully realize their potential as vital partners on the Mohs team.

See detailed Fundamentals of Mohs Surgery course schedules at www.mohssurgery.org.

Educational Objectives

After participation in this activity, physicians should be able to:

- Identify important Mohs practice efficiencies, including the use of specialized instrumentation and the management of patient flow and tissue specimen transfer.
- Recognize appropriate indications for Mohs surgery based on histologic subtype and anatomic location.
- Identify Mohs mapping techniques to ensure proper orientation of the specimen and correlate histologic findings with the surgical wound.
- Summarize technical skill and/or precision necessary in the execution of the Mohs technique.
- Explain the appropriate method(s) for surgical removal of tissue specimen, to aid in optimal histopathologic examination of deep and lateral margins.



Accreditation Statement

This activity has been planned and implemented in accordance with the accreditation requirements and policies of the Accreditation Council for Continuing Medical Education (ACCME) through the joint providership of The A. Webb Roberts Center for Continuing Medical Education of Baylor Scott & White Health and the American Society for Mohs Surgery (ASMS). The A. Webb Roberts Center for Continuing Medical Education of Baylor Scott & White Health is accredited by the ACCME to provide continuing medical education for physicians.

Credit Designation Statement – Basal Cell and Squamous Cell Cancer Dermatopathology

The A. Webb Roberts Center for Continuing Medical Education of Baylor Scott & White Health designates this live activity for a maximum of 16 *AMA PRA Category 1 Credits*[™]. Physicians should claim only the credit commensurate with the extent of their participation in the activity.

Credit Designation Statement – Fundamentals of Mohs Surgery

The A. Webb Roberts Center for Continuing Medical Education of Baylor Scott & White Health designates this live activity for a maximum of 41.25 *AMA PRA Category 1 Credits*[™]. Physicians should claim only the credit commensurate with the extent of their participation in the activity.

Faculty Disclosure

As a provider accredited by the ACCME, it is the policy of The A. Webb Roberts Center for Continuing Medical Education of Baylor Scott & White Health to require the disclosure of anyone in a position to control the content of an educational activity. All relevant financial relationships with any commercial interests and/or manufacturers must be disclosed to participants at the beginning of the Activity.

Mohs Technician Credit (Fundamentals of Mohs Surgery)

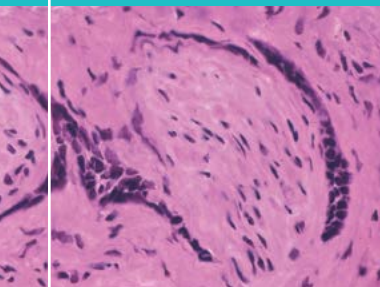
Mohs technicians participating in the Fundamentals of Mohs Surgery course will receive medical education credit in the form of Contact Hours provided by the National Society for Histotechnology (NSH).

About the American Society for Mohs Surgery

The ASMS is a professional medical education society with over 1100 active physician and Mohs technician members. Our physician membership is comprised primarily of Board-certified M.D. and D.O. surgical dermatologists. Membership opportunities in the ASMS are available to U.S. and international physicians and Mohs technicians.

Our educational programs are tailored to the ongoing development of members' dermatologic surgery, Mohs surgery, reconstruction, and histopathology skills as they relate to skin cancer treatment. Due to Mohs surgery's efficacy in treating basal cell and squamous cell carcinoma, high-quality Mohs training is advocated for all surgically-oriented dermatologists. We are pleased to see an increase in the number of international physicians training in Mohs surgery, signaling a growing awareness and utilization of this procedure worldwide.

In addition to the courses described in this brochure, the ASMS sponsors an annual Closure course and Annual Meeting, *Dermatologic Surgery: Focus on Skin Cancer*. We also provide an educational Peer Review program in which members regularly submit cases for quality assurance feedback. Our Clinical Observational Preceptorship program pairs newer Mohs surgeons with other highly-experienced Mohs practitioners, enabling discussion of multiple surgeries and histopathologic interpretations performed in real time. Each issue of our quarterly newsletter, *The Beveled Edge*, contains Mohs quality assurance-related articles and summaries of the educational material presented in all ASMS courses.



Physician Faculty

Antoanella Calame, M.D.
John B. Campbell, M.D.
Kevin M. Crawford, M.D.
Carlos A. Garcia, M.D.
Kenneth G. Gross, M.D.
Henry D. Haskell, M.D.
Nicole James
Alexander Miller, M.D.
Lee S. Portnoff, M.D.
Rainer E. Sachse, M.D.
James A. Schiro, M.D.
Howard K. Steinman, M.D.
Jason S. Stratton, M.D.
Valencia D. Thomas, M.D.
Andrew H. Weinstein, M.D.

Microscope Laboratory Faculty

Stephen E. Kessler, D.O.
Kenny R. Malott, M.D.
Diosdado P. Non, Jr., M.D.
Richard J. Ort, M.D.

Mohs Technician Faculty

Brian Beck
Rebecca Burks
Daniel H. Gong, M.S., MSO, C-PM
Larry Ladd
Alex G. Lutz, B.S.
Joy Marasigan, HT (ASCP)
Guillermo (Bill) Navarro
Jerry Rydberg
Amy L. Shields
Juan (B. J.) Villarreal
Marilyn Weiss, HT (ASCP)
Rick Wolf, L.P.N.

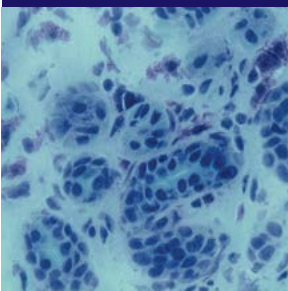
Topic Overview

Basal and Squamous Cell Cancer Dermatopathology

- BCC, SCC and Anatomic Structures
- Common BCC and SCC Mimics
- Day 1: Introductory Session; Day 2: Advanced Session
- Independent Microscope Slide Review Sessions
- Inflammatory and Reparative Findings at Biopsy Sites
- Non-Mohs “Pure Pathology” Approach Presented by Board-Certified Dermatopathologists
- Projecting Microscope Case Presentation and Discussion (Day 2)

Fundamentals of Mohs Surgery

- Basic Mohs Technique
- Cryostat Specimen Quality
- Establishing a Mohs Practice
- Histopathology of BCC, SCC and Unusual Tumors
- Independent Slide Review with Faculty Assistance Available
- Indications for Mohs Surgery
- Intraneural and Perineural Cancer
- Laboratory Director Responsibilities and Supervision
- Mapping, Basic to Advanced
- Microscope Lab Small Group Teaching Sessions
- Mohs Surgical Pearls
- Office Set-up and Patient Flow Considerations
- Post-Mohs Radiation Discussion
- Quality Assurance Issues
- Tissue Staining Protocols
- Video Microscope Case Review



connect
discover
advance



Hotel Reservation and Meeting Information



DoubleTree Hotel San Diego, Mission Valley

7450 Hazard Center Drive
 San Diego, CA 92108
 Telephone: 619-297-5466
 Toll-Free Reservations: 1-800-222-8733

Online Reservations Link:

<https://aws.passkey.com/go/MohsSanDiego2018>

(Group Code: MOH)

Guest Room Rate: \$180 per night (Single or Double Occupancy) - Queen/King Bed Options

Reservations Cut-Off Date: October 24, 2018

For Planning Purposes, ASMS Onsite Registration Begins:

Basal and Squamous Cell Cancer Dermatopathology
 Tuesday, Nov. 6, 6:30 a.m.

Fundamentals of Mohs Surgery

Wednesday, Nov. 7, 6:00 p.m.
 (continues on Thursday, Nov. 8, 7:00 a.m.)

Registration Form

Basal Cell & Squamous Cell Cancer Dermatopathology and Fundamentals of Mohs Surgery

Membership Application: Qualified physicians may apply for ASMS membership. To take advantage of the member-discounted course registration fee. Contact Brooke Kimberlin at brooke@mohssurgery.org

Special Needs: The ASMS encourages participation by all individuals. If you have special dietary, mobility or other needs, please notify ASMS at 800.616.2767. (Meeting content is presented in English. If interpretative assistance is required, participant must arrange this in advance via an independent translation service.)

Advance Reservation Required: Due to space limitations and other planning considerations, advance registration is required. We will make every effort to accommodate late registration requests. Those received after Friday, November 2 will be assessed a late fee of \$100.

Cancellations and Refund policy: Registration fees, minus a \$50 administration fee, will be refunded upon written notice of cancellation if the request is received at the ASMS office no later than October 24, 2018. Email bkimberlin@mohssurgery.org or fax 714-362-9540. Refunds will not be given after that date.

Registration Fee Schedule

Basal Cell & Squamous Cell Dermatopathology Course

November 6-7, 2018

Current ASMS Member Physician

Introduction (Day 1) Only	\$350	_____
Advanced (Day 2) Only	\$350	_____
Introduction + Advanced (Both days)	\$650	_____

Non-ASMS Member Physician

Introduction (Day 1) Only	\$475	_____
Advanced (Day 2) Only	\$475	_____
Introduction + Advanced (Both days)	\$900	_____

Current Dermatology Resident

Introduction (Day 1) Only	\$200	_____
Advanced (Day 2) Only	\$200	_____
Introduction + Advanced (Both days)	\$350	_____

Sub-Total Dermatology Course _____

Fundamentals of Mohs Surgery

November 8-11, 2018

Physician Fees

Current ASMS Member Physician	\$1525	_____
Non-ASMS Member Physician	\$2125	_____
Current Dermatology Resident	\$900	_____
Active Duty Military Physician	\$900	_____
Slide Review Only	\$600	_____
(Requires prior FMS attendance)		

Mohs Technician Fees

Mohs Technician Employed by Member		
1 Day Advanced Tech Course (Nov. 7)	\$150	_____
Fundamentals of Mohs Surgery	\$1275	_____
Mohs Technician Employed by Non-Member		
1 Day Advanced Tech Course (Nov.7)	\$250	_____
Fundamentals of Mohs Surgery	\$1950	_____

Save \$100 if Attending Two Courses - \$100 _____

Additional Materials: (Optional)

Recommended Mohs Textbooks

Mohs Surgery: Fundamentals & Techniques*	\$130	_____
Mohs Surgery & Histopathology: Beyond the Fundamentals*	\$175	_____
*Shipping Fee (per book)	\$10.95	_____

Total Amount Due _____

Registrant Information:

Please print as you wish name to appear on course materials/name badge.

Physician Name _____ Suffix (M.D., D.O.) _____

Technician Name _____ Suffix (HT, R.N., M.A., etc.) _____

Practice Name _____

Practice Address _____

City _____

State _____ Zip _____ Country _____

Practice Telephone _____ Cell Phone _____

Practice Fax _____ Email _____

Please list any special needs: _____

Are you staying at the Doubletree? Y/N _____ Reservation Last Name _____

How did you hear about these meetings?

AAD Calendar Mailed Brochure Colleague

ASMS Website Email Broadcasts

Other _____

Payment Information:

Check Enclosed (U.S. Funds, Payable to ASMS) **Total** _____

VISA/MasterCard/Discover/American Express **Total** _____

Credit Card# _____

Expiration Date _____ 3 or 4-digit Verification Code _____

Name on Card _____

Mail or fax form with check or credit card information to:

American Society for Mohs Surgery

Attn: Novella Rodgers, Executive Director
6475 E. Pacific Coast Highway, Box 700
Long Beach, CA 90803-4201

Email: brooke@mohssurgery.org

Phone: 1-800-616-ASMS (2767)

Fax: 714-362-9540

Please contact ASMS office to verify that faxed registration was received.

Online Registration: www.mohssurgery.org

In order to register for meetings online, physicians and Mohs technicians must have an existing user name and password or register as a first-time user to obtain individual log-in credentials.



**Basal Cell & Squamous Cell Cancer
Dermatopathology**
November 6-7, 2018

Fundamentals of Mohs Surgery
November 8-11, 2018



AMERICAN SOCIETY
FOR MOHS SURGERY

6475 E. Pacific Coast Highway, Box 700
Long Beach, CA 90803-4201

PRESORTED
FIRST CLASS
U.S. POSTAGE
PAID

LOS ANGELES CA
PERMIT NO 32365

A photograph of a sunset over a body of water. The sun is low on the horizon, creating a bright orange and yellow glow that reflects on the water's surface. The sky is a mix of orange, yellow, and light blue. The water is dark with shimmering reflections of the sun.

connect
discover
advance

- ▶ **Both Physician and Mohs Technician**
Educational Sessions Available for
Fundamentals of Mohs Surgery

(See Complete Program Schedules at www.mohssurgery.org)