

The Closure Course



MAY 25-26, 2016

connect
discover
advance

Newport Beach Marriott Hotel and Spa
Newport Beach, California

Directors:

Kenneth Gross, M.D.
Alexander Miller, M.D.

*Jointly Provided by the American Society for Mohs Surgery and
Baylor Scott & White Health*



AMERICAN SOCIETY
FOR MOHS SURGERY



The Closure Course

Location

Enjoy our pre-Memorial Day *Closure Course* and stay for *Dermatologic Surgery: Focus on Skin Cancer*, all the while enjoying the unique coastal city of Newport Beach, California.

The Newport Beach Marriott Hotel and Spa is conveniently located near many diverse attractions –from natural wonders and family-friendly outdoor activities to fine dining, upscale shopping, and cultural and sporting events. Take a look at the city's visitor website, www.visitnewportbeach.com to see everything that this beautiful area has to offer, as well as other Orange County leisure activities just a short drive away.

Program Overview

The *Closure Course* has been designed to provide a uniquely practical learning experience for dermatologists who are already comfortable with basic dermatologic surgery closures, but wish to take their reconstruction skills to the next level of competency.

The course is fast-paced, with valuable question and answer sessions following each unit of study. Attendees will be exposed to flaps, grafts, fusiform closures, and anatomic site-specific discussions. Many valuable tips and pearls are imparted by faculty members with the important aim of improving patients' cosmetic and functional outcomes. Concepts presented will quickly be assimilated into attendees' practices, as they gain confidence in selecting and performing the optimal reconstruction techniques for a variety of defects.

An important feature of the *Closure Course* is an elective – but highly recommended – hands-on laboratory experience, to help attendees integrate newly-learned concepts and gain additional perspectives from other experienced dermatologic surgeons. Participants will utilize realistic visco-elastic training models to practice closing surgical wounds on the scalp, forehead, temple, eyebrow, cheek, nose, eyelids, lips, chin and ears. Each model is shared by two attendees for additional idea collaboration and discussion.

Educational Objectives

Following participation in this activity, physician attendees should be able to:

- Demonstrate improved skill levels in the closure of skin surgery defects
- Incorporate new techniques and closure types, including flaps, graft, and fusiform
- Apply specific closure techniques as appropriate for different anatomic regions
- Recognize optimal reconstruction options for specific surgical defect types and anatomic locations

Accreditation Statement

This activity has been planned and implemented in accordance with the accreditation requirements and policies of the Accreditation Council for Continuing Medical Education (ACCME) through the joint providership of Scott & White and the American Society for Mohs Surgery (ASMS). Scott & White is accredited by the ACCME to provide continuing medical education to physicians.

Credit Designation Statement

Scott & White designates this live activity for a maximum of 16.75 *AMA PRA Category 1 Credits*[™]. Physicians should claim only the credit commensurate with the extent of their participation in the activity.

Disclosure

As a provider accredited by the ACCME, it is the policy of Scott & White to require the disclosure of anyone in a position to control the content of an educational activity. All relevant financial relationships with any commercial interests and/or manufacturers must be disclosed to participants at the beginning of the activity.



About the American Society for Mohs Surgery

The ASMS is a professional medical education society with over 1150 physician and Mohs technician members, primarily Board-certified dermatologists with extensive education and experience in dermatologic surgery and the Mohs surgical technique. Due to the high incidence of skin cancer worldwide and the efficacy of Mohs surgery in the treatment of basal cell and squamous cell carcinomas, the ASMS advocates high quality Mohs training for all surgically-oriented dermatologists. We also acknowledge and welcome Society participation by other international specialists who routinely utilize the Mohs technique in their respective countries.

We support our members through highly interactive educational programs, strong Mohs advocacy efforts, practice issues assistance, and patient education and referral resources. Our Peer Review program provides important quality assurance feedback on a regular basis. Our Clinical Observational Preceptorship program offers exceptional one-on-one training opportunities by pairing new Mohs surgeons with highly-experienced surgical mentors. Our quarterly member newsletter, *The Beveled Edge*, informs Mohs surgeons of vital policy issues, announces new Society programs and services, and includes educational highlights from our annual courses.

The ASMS's educational activities now total four. Spring (May) meetings include *The Closure Course* and *Dermatologic Surgery: Focus on Skin Cancer*. Fall (November) meetings include *Basal Cell and Squamous Cell Cancer Pathology for Mohs Surgeons* and *Fundamentals of Mohs Surgery*. New and expanded topics are regularly introduced to keep pace with current educational needs.

Closure Course Faculty

Henry W. Clever III, M.D.

Carlos A. Garcia, M.D.

Kenneth G. Gross, M.D.

Alexander Miller, M.D.

Anne K. Truitt, M.D.

Edward H. Yob, D.O.

Topic Overview

New Concepts and Techniques in Biopsy

Procedural Set-Up and Instrumentation

Local Anesthesia Pearls

Fusiform Excision Pearls

Fusiform-Based Flap Theory for Advancement and Rotation Flaps

Advancement and Rotation Flap Refinements

Z-Plasty Based Flap Theory for Transposition Flaps

Site-Specific Closure Techniques

STSG, FTSG and KITE Grafts

Transposition Flap Refinements

Evaluating Options in Selecting Closure Techniques

Closure Course Schedule

Tuesday, May 24

5:00-7:00 p.m. Registration

Wednesday, May 25

6:00 – 7:00 a.m. Registration (cont.) and CME Sign-In
Buffet Breakfast

7:00 a.m. Surgery Set-up and Instrumentation – Kenneth G. Gross, M.D.
Q & A

7:35 a.m. Biopsy Pearls – Kenneth G. Gross, M.D.
Q & A

8:10 a.m. Local Anesthesia – Kenneth G. Gross, M.D.
Q & A

8:45 a.m. Fusiform Excision – Kenneth G. Gross, M.D.
Q & A

9:45 a.m. Refreshment Break

10:05 a.m. Fusiform Flap Theory – Kenneth G. Gross, M.D.
Q & A

10:30 a.m. Z-Plasty Flap Theory – Kenneth G. Gross, M.D.
Q & A

10:55 a.m. Hand and Foot Closure Considerations – Kenneth G. Gross, M.D.
Q & A

11:40 a.m. Oh-Oh, What Now?: Dealing with Complications – Alexander Miller, M.D.
Q & A

12:15 p.m. Buffet lunch

1:00 p.m. NON-CME Optional Session: Suturing Techniques – Jason Sommers, R.N., M.B.A.

2:00 p.m. Skin Grafting – Kenneth G. Gross, M.D.
Q & A

2:55 p.m. Scalp Closure Considerations – Kenneth G. Gross, M.D.
Q & A

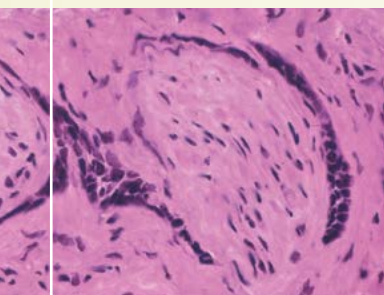
3:40 p.m. Refreshment Break

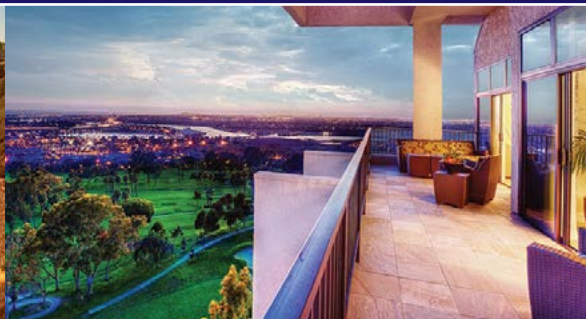
4:00 p.m. Forehead Closure Considerations – Kenneth G. Gross, M.D.
Q & A

4:20 p.m. Face and Temple Closure Considerations – Kenneth G. Gross, M.D.
Q & A

5:00 p.m. Closure Pearls – Kenneth G. Gross, M.D.; Alexander Miller, M.D.
Q & A

6:00 p.m. Wednesday Session Adjourns





Thursday, May 26

- 6:00 a.m. CME Sign-In and Buffet Breakfast**
- 7:00 a.m. Nose Closure Considerations** – Kenneth G. Gross, M.D.
Q & A
- 8:20 a.m. Lip Closure Considerations** – Kenneth G. Gross, M.D.
Q & A
- 9:20 a.m. Refreshment Break**
- 9:40 a.m. Ear Closure Considerations** – Kenneth G. Gross, M.D.
Q & A
- 10:45 a.m. Eyelid Closure Considerations** – Kenneth G. Gross, M.D.
Q & A
- 11:25 a.m. Flap Refinements** – Alexander Miller, M.D.
Q & A
- 12:05 p.m. Choosing a Closure Technique: Evaluating Options** – Alexander Miller, M.D.
Q & A
- 12:30 p.m. Lunch**
- 2:30 p.m. Elective Visco-Elastic Model Laboratory** – Henry W. Clever III, M.D.;
Carlos A. Garcia, M.D.; Kenneth G. Gross, M.D.; Alexander Miller, M.D.;
Anne K. Truitt, M.D.; Edward H. Yob, D.O.
- 6:00 p.m. Conclusion of Closure Course**



connect
discover
advance



Hotel Information



The Closure Course

Wednesday – Thursday, May 25-26, 2016

(See separate brochure for ASMS *Dermatologic Surgery: Focus on Skin Cancer* Symposium May 26-29)

Newport Beach Marriott Hotel and Spa
900 Newport Center Drive
Newport Beach, CA 92660

Important Reservation Dates:

Group Discount Cut-off Date: Tuesday, May 3, 2016

(Group Rate Inclusive Dates: May 23-May 31, 2016)

Reservation Methods:

Toll-Free Telephone Number: 877-622-3056

Online: <https://resweb.passkey.com/go/AmericanSocietyforMohs>



Guest Room Rates:

Single or Double - \$179.00

Triple - \$199.00

Quad - \$219.00

Location:

The Newport Beach Marriott Hotel and Spa is located 5 miles from the Orange County/John Wayne Airport (SNA) – an approximately 15 minute commute.

All About the Newport Beach Area: www.visitnewportbeach.com



American Society for Mohs Surgery

The Closure Course May 25-26, 2016

Online Registration: www.mohssurgery.org Click on Education

Closure Course Registration

ASMS Member Physician \$650 _____
Non-ASMS Member Physician \$800 _____
Dermatology Resident (Program Director Letter Required) \$450 _____

Elective Closure Lab Model Fee

Onsite Registration Charge \$275 _____
\$50 _____

Total Amount Due \$ _____

*Save \$100 if attending both Closure Course and Dermatologic Surgery: Focus on Skin Cancer.
(Take discount on Focus on Skin Cancer registration form.)*

Registrant Information

Please print name as you wish it to appear on course roster and name badge

Physician Name _____ Suffix _____
M.D./D.O.

Practice Name _____

Practice Address _____

City _____ State _____ Zip _____

Practice Phone Number _____ Cell Phone Number _____

Practice Fax Number _____ Email _____

Please Indicate Any Special Needs _____
(Including Dietary Restrictions)

Payment Information

Check Enclosed (U.S. Funds, Payable to ASMS) Check Amount \$ _____

VISA/MasterCard/Discover/American Express Credit Card Total \$ _____

Credit Card# _____

Expiration Date _____ 3 or 4-digit Verification Code _____

Name on Card / Authorization Signature _____

Mail or fax form with check or credit card information to:

American Society for Mohs Surgery (ASMS)
6475 E. Pacific Coast Hwy., Box 700
Long Beach, CA 90803
execdir@mohssurgery.org

Email: nrodgers@mohssurgery.org
Phone: 1-800-616-ASMS (2767)
Fax: 714-379-6272 or 714-362-9540

(Please call to verify that your faxed registration was received if ASMS confirmation/credit card receipt is not emailed within 24 hours.)

Online Registration at www.mohssurgery.org

Member physicians must log in using current ASMS user name and password. Each Non-member physician must register as a first-time site user prior to completing online registration. If any questions concerning this process or to register by phone, please contact the ASMS Executive Office at 1.800.616.ASMS (2767) or email Novella Rodgers at nrodgers@mohssurgery.org.



AMERICAN SOCIETY
FOR MOHS SURGERY

6475 E. Pacific Coast Hwy., Box 700
Long Beach, CA 90803

PRESORTED
FIRST CLASS
U.S. POSTAGE

PAID

LOS ANGELES CA
PERMIT NO 32365

The Closure Course

MAY 25-26, 2016



connect
rediscover
advance